

# WEEDS OF GUAM

# *Ruellia nudiflora*

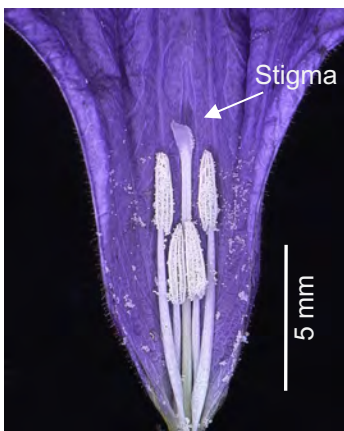
Weed #A2023-1

Acanthaceae



Patch of *Ruellia nudiflora* along roadside

Corolla 5-lobed, mauve to bluish purple



Didynamous stamens and style



Terminal inflorescence



Opposite leaves and a node with an axillary inflorescence

<b>SCIENTIFIC NAME:</b>	<i>Ruellia nudiflora</i> (Engelm. & A.Gray) Urb. (Manzitto-Tripp, E. A. and T. Daniel., 2023).
<b>COMMON NAME:</b>	Violet Ruellia, Common Wild Petunia, Violet Wild Petunia.
<b>SYNONYMS:</b>	<i>Cryphiacanthus tubiflorus</i> Oerst., <i>Dipteracanthus nudiflorus</i> Engelm. & A.Gray, <i>Ruellia davisiorum</i> Tharp & F.A.Barkley, <i>Ruellia glabrata</i> Wall., <i>Ruellia gooddingiana</i> A.Nelson, <i>Ruellia strictopaniculata</i> Tharp & F.A.Barkley, <i>Ruellia yucatanana</i> (Leonard) Tharp & F.A.Barkley, etc.
<b>ORIGIN:</b>	Southern USA.

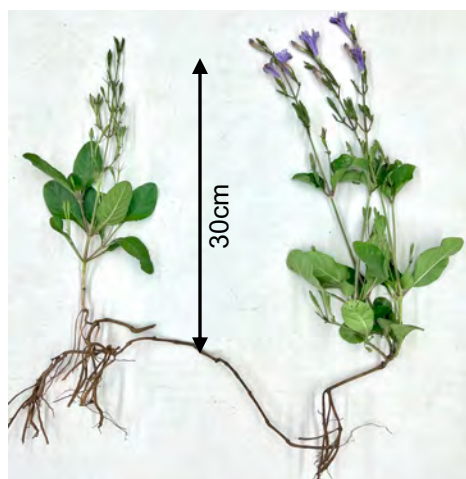
Prepared by Mari Marutani, Michael Angelo P. Fernandez, Wei Xiao and James McConnell.

Factsheet: Weeds of Guam#A2023-1. November 2023. College of Natural and Applied Sciences, University of Guam Mangilao GU 96923.

**Acknowledgements:** This project was funded by USDA/NIFA/RIIA 2021-70004-35830 and 2023-70008-41051. Technical assistance by Lara Mazloun and Antonelli Salayon. The Factsheet was reviewed by Dr. T. Daniel.

# *Ruellia nudiflora*

Weed #A2023-1



Erect and decumbent growth



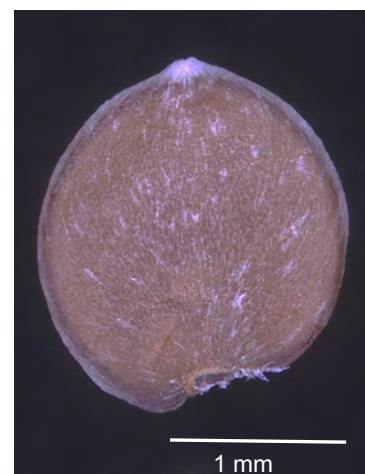
Capsule opens at maturity, seeds released



Seeds



Seedlings (18-day old)



Close-up of seed

<b>FORM:</b>	Erect herb.
<b>ROOT:</b>	Basal rhizome with fibrous roots, and occasionally adventitious roots are produced in decumbent branches where nodes touch the ground.
<b>STEM:</b>	Quadrangular, green to greyish green, young stems pubescent.
<b>LEAVES:</b>	Simple, green to dark green, blade ovate to elliptic, apex acute to rounded, margin undulate to approximately entire, surface often pubescent, densest along veins; oppositely arranged.
<b>INFLORESCENCE:</b>	A (dominating) terminal thyrse with a few axillary dichasial cymes (3-flowered or often 1 flower with two underdeveloped flower buds).
<b>FLOWER:</b>	<b>Calyx:</b> 5-lobed, filiform, pubescent with broad curly glossy hairs; <b>corolla:</b> mauve to bluish purple, 5-lobed, lobes elliptic or broadly, 2.5-4 cm in length, corolla tube narrowly funnel shaped; <b>stamens:</b> 4, white, included in throat, strongly didynamous, anthers not or barely overlapping, filaments fused at base then separate; <b>style:</b> white to purple. Flowers in both wet and dry seasons in Guam, only lasts one day.
<b>FRUIT:</b>	Spindle-shaped capsule, 1.6-2.0 cm long, encircled by persistent sepals, green at first changing to brownish; explosive dehiscence, capable of spreading seeds distantly; containing 7-15 seeds.
<b>SEED:</b>	Orbicular and pointed at one end, brown, pubescent with extremely hygroscopic hairs.
<b>HABITAT:</b>	Occur in roadsides and disturbed fields.
<b>PROPOGATION:</b>	Seeds, stem cuttings, plant division
<b>USES:</b>	Roots and leaves can be used medicinally.
<b>MISCELLANEOUS:</b>	An invasive weed with rapid seed dispersal in a habitat.

## References:

- Ezcurra, C. (1993). Systematics of *Ruellia* (Acanthaceae) in southern south America. *Annals of the Missouri Botanical Garden*, 787-845.
- Long, R. W. (1976). Biosystematics of *Ruellia tuberosa* L. (Acanthaceae). *American Journal of Botany*, 63(7), 951-959.
- Manzitto-Tripp, E. A., & Daniel, T. F. (2023). Phylogeny and revised classification of New World *Ruellia*. *Taxon*, 72(5), 1034-1056.
- POWO (2023). Plants of the World Online (<https://powo.science.keew.org/taxon/urn:lsid:ipni.org:names:53920-1>). Accessed on 18 Nov 2023.
- Tripp, E. A. (2007). Evolutionary relationships within the species-rich genus *Ruellia* (Acanthaceae). *Systematic Botany*, 32(3), 628-649.
- Vargas-Mendoza, C. F., Ortigón-Campos, I., Marrufo-Zapata, D., Herrera, C. M., & Parra-Tabla, V. (2015). Genetic diversity, outcrossing rate, and demographic history along a climatic gradient in the ruderal plant *Ruellia nudiflora* (Acanthaceae). *Revista mexicana de biodiversidad*, 86(2), 508-520.
- WFO (2023). *Ruellia nudiflora* (Engelm. & A.Gray) Urb. (<http://www.worldfloraonline.org/taxon/wfo-0000401124>). Accessed on 18 Nov 2023.

## Disclaimer:

Published by Agriculture and Life Sciences Division, the College of Natural & Applied Sciences, University of Guam, in cooperation with the U.S. Department of Agriculture, under Dr. Rachael T. Leon Guerrero, Director/Dean. University of Guam, CNAS, UOG Station, Mangilao, Guam 96923. The University of Guam is an equal opportunity/affirmative action institution providing programs and services to the people of Guam without regard to race, sex, gender identity and expression, age, religion, color, national origin, ancestry, disability, marital status, arrest and court record, sexual orientation, or status as a covered veteran. Reference to product name does not imply approval or recommendation of such product by the University of Guam to the exclusion of others that may be equally suitable. For more information, please contact the Dean's Office at 671-735-2001