

The Guam Comprehensive Cancer Control Coalition (GCCCC) has worked in partnership with cancer stakeholders to prioritize and implement key strategies to reduce cancer gaps and enhance prevention and treatment services for the island community.

This publication is the third in the series of Guam Cancer Facts and Figures since it began in 2009. Guam Cancer Registry (GCR) data for 2013-2017 was analyzed and comprises the major portion of this report. Risk factor prevalence data from the Behavioral Risk Factor Surveillance System (BRFSS) and Youth Risk Behavioral Survey (YRBS) surveys supplemented the information in this publication.

In this document, new cancer cases rates represent the number of new cases of cancer per 100,000 population for a given time period. Using rates allows for comparisons with other populations regardless of population size. Because of Guam's small population size, new cancer cases rates and cancer death rates were combined into 5-year periods for better statistical strength.

This publication was funded in part by the Office of Research and Sponsored Programs of the University of Guam, National Cancer Institute (NCI) of the National Institutes of Health under PACHE Award No. U54CA143728 awarded to the University of Guam Cancer Research Center, and the Centers for Disease Control and Prevention (CDC) Cooperative Grant Agreement No. 1 NU58DP007176-01-00 awarded to the Guam Department of Public Health and Social Services.

#### To get a copy of the full report contact:

DPHSS Guam Comprehensive Cancer Control Program

Department of Public Health & Social Service  
155 Hesler Place Hagatna, Guam  
96910

Website: [www.dphss.guam.gov](http://www.dphss.guam.gov)

#### For more information on Cancer in Guam contact:

##### UOG Guam Cancer Registry

<https://www.uog.edu/research/guam-cancer-registry>

##### American Cancer Society

<https://www.cancer.org/>

##### Guam Cancer Care

<https://guamcancercare.org/>

##### PIPCHÉ

<https://pipche.org>



# GUAM CANCER FACTS & FIGURES

2013 - 2017

A Summary of Guam's Cancer  
Incidence & Mortality



## Top Causes of Death In Guam

#1 Cardiovascular Diseases

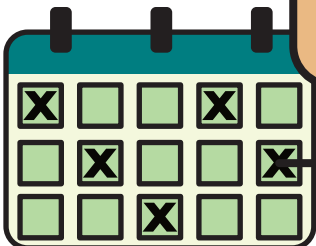
#2 **CANCER**

#3 Septicemia

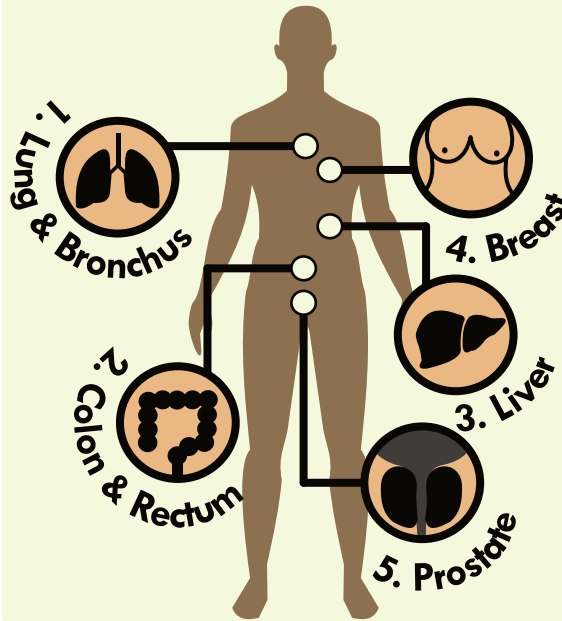
On average, 1 person in Guam, is diagnosed with cancer every day.



1 person dies of cancer every 2.3 days.



## Top 5 Cancers

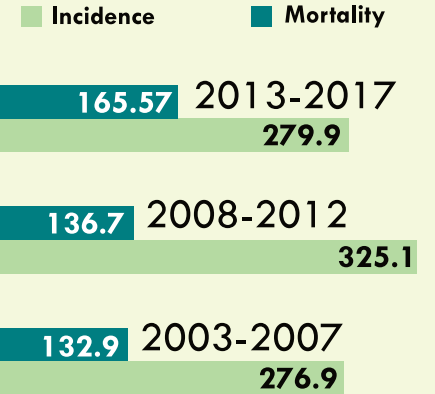


Males have higher incidence rates than females.



Males have higher cancer mortality rates than females.

## Cancer Incidence & Mortality Trends by Rates



## Cancer Incidence & Mortality Rates By Ethnicity 2013-2017

